

FIG. 4. Data for isomekes between almandine-type garnet (No. 1 in Table 1) and quartz  $\parallel c$ . Solid lines based on numerical analysis discussed in text. Type of dilatometer used: 1, 5—"gate" (antimony-doped silicon gate); 2, 3, 4—"J"; 6—"gate" (WC gate).

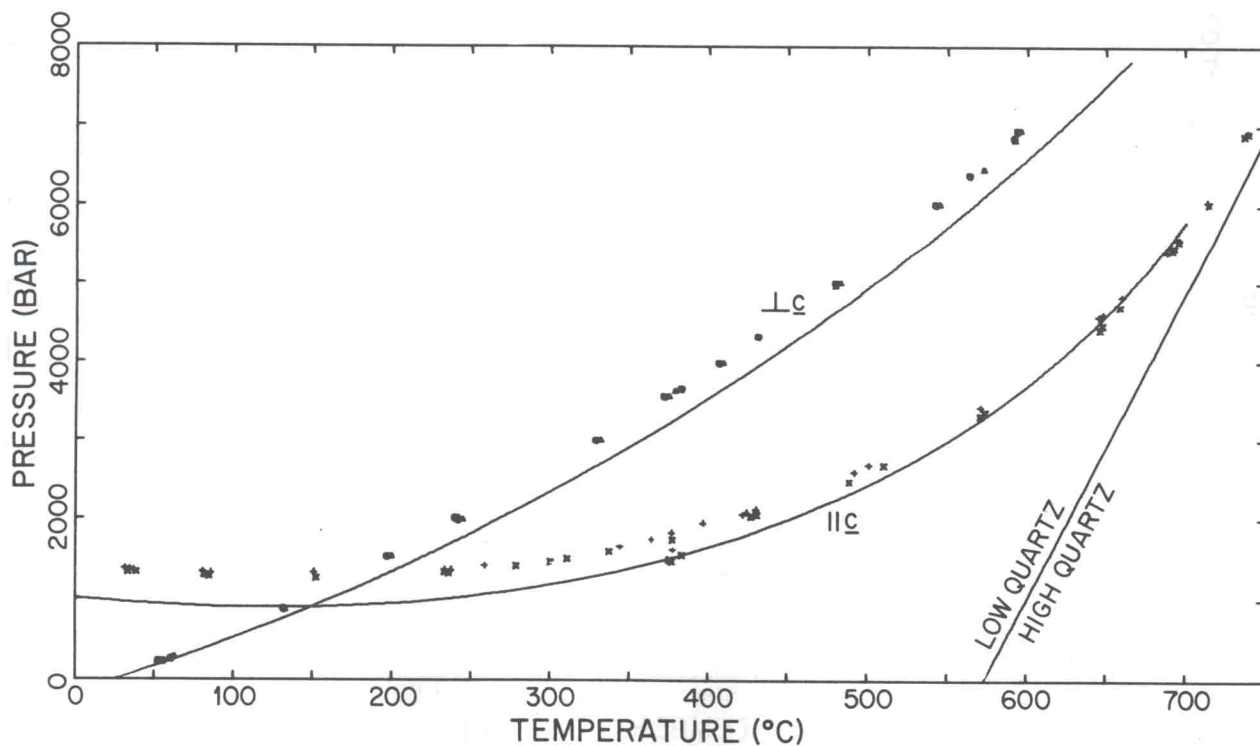


FIG. 5. Data for isomekes between pyrope garnet (No. 3 in Table 1) and quartz  $\perp c$  and  $\parallel c$  using "gate" dilatometer (WC gate). Solid lines for comparison are derived from interpolative equations for quartz and almandine-type garnet.

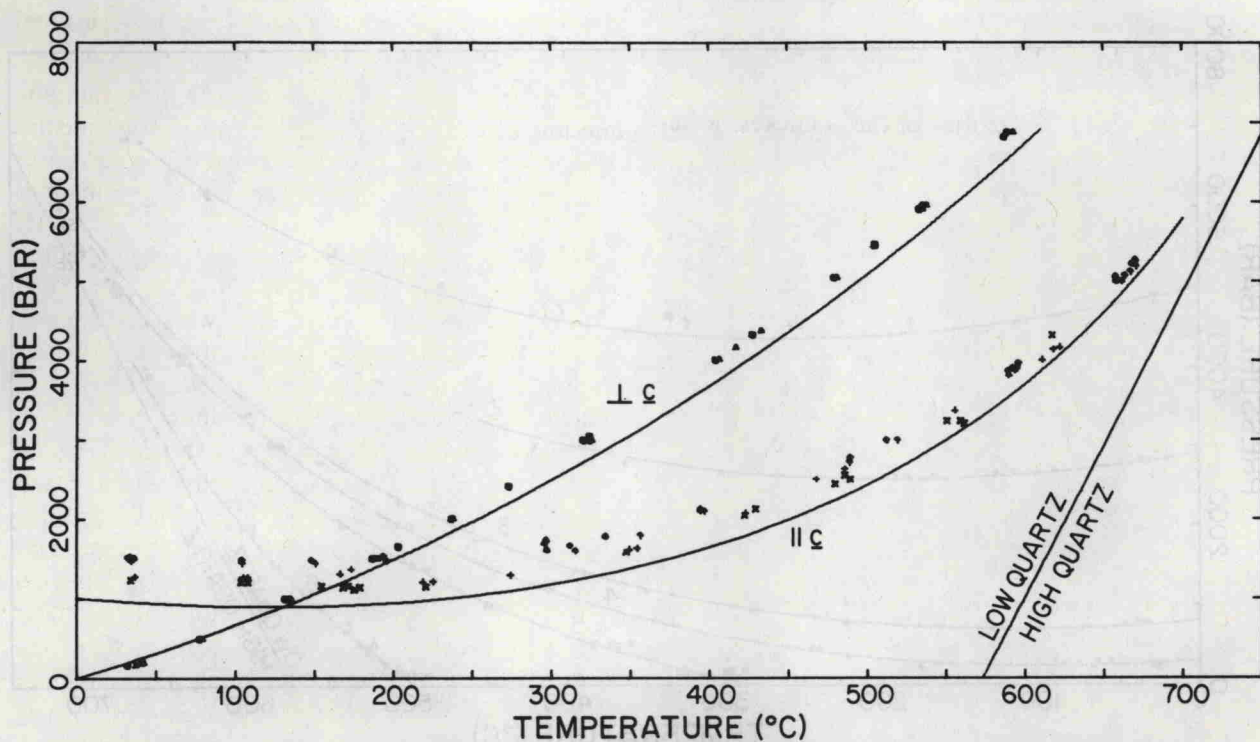


FIG. 6. Data for isomekes between spessartitic almandine (No. 5 in Table 1) and quartz  $\perp c$  and  $\parallel c$  using "gate" dilatometer (WC gate). Solid lines for comparison are derived from interpolative equations for quartz and almandine-type garnet.

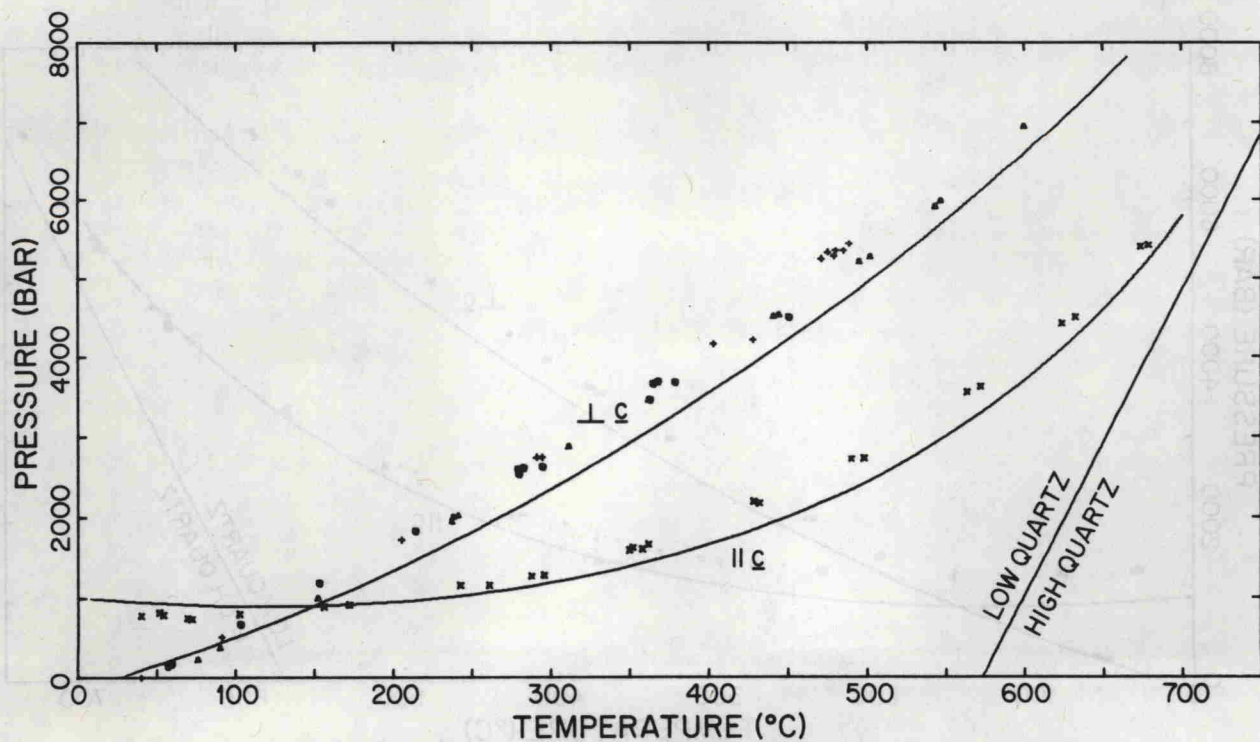


FIG. 7. Data for isomekes between grossular (No. 6 in Table 1) and quartz  $\perp c$  and  $\parallel c$  using "opposed rods" dilatometer. Solid lines for comparison are derived from interpolative equations for quartz and almandine-type garnet.